

Water Bottle Holder/Mount Replacement

Installation Instructions

Tools Required

- Phillips Head screwdriver
- Rubber mallet

1. Read and understand all instructions thoroughly before installing this kit.
2. Verify kit contents. See Figure 1.

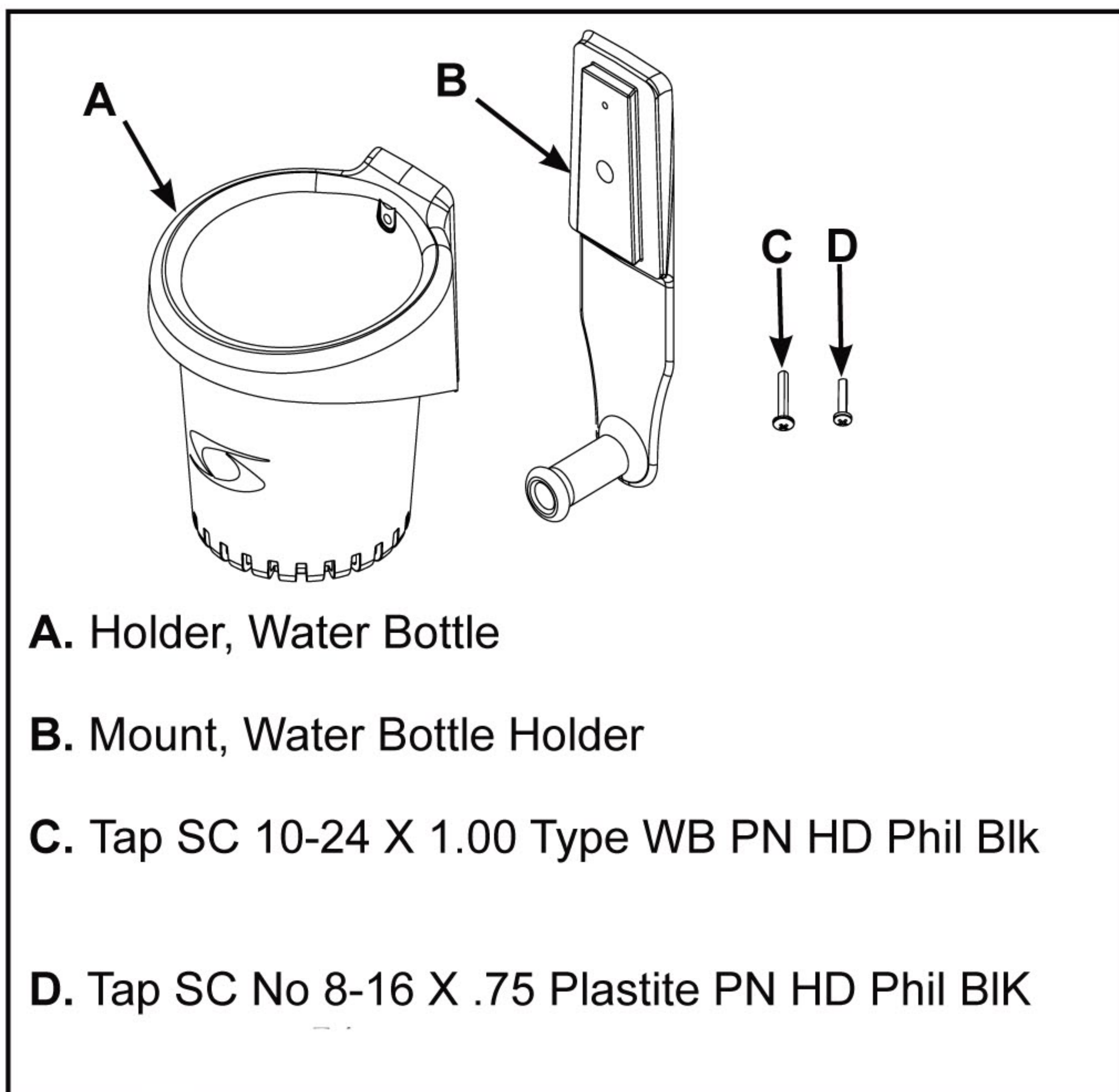


Figure 1

3. Locate water bottle holder/mount.

4. Remove water bottle holder.

- A. Using a Phillips screwdriver, remove screw (C) securing water bottle holder in place. See Figure 2.
- B. Pull water bottle holder (A) upward, sliding off water bottle holder mount (B). See Figure 2.

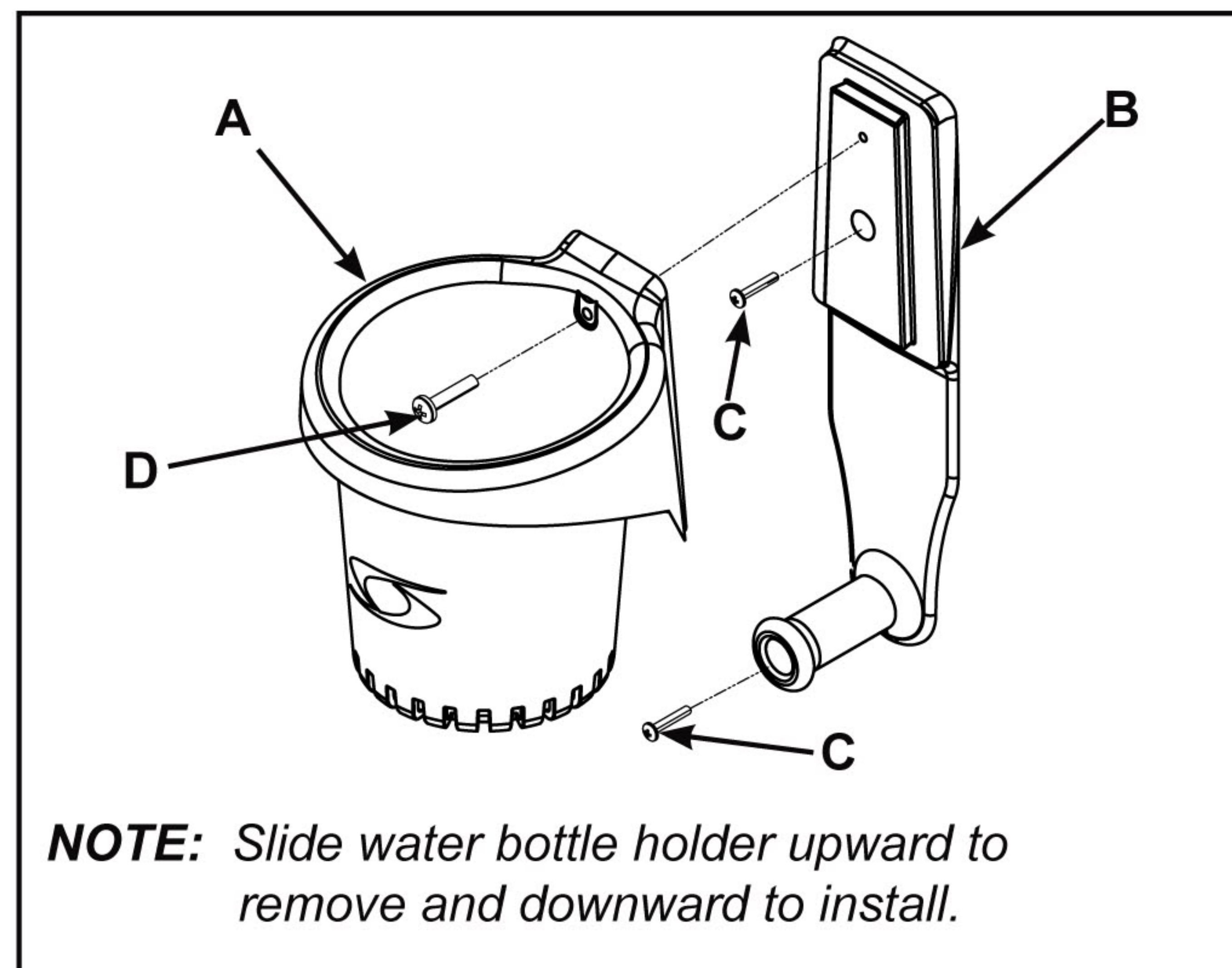


Figure 2

5. Remove water bottle holder mount.

- A. Using a Phillips screwdriver, remove two screws (C) securing water bottle holder mount (B) to frame. See Figure 2.

6. Install replacement water bottle holder mount.

- A. Locate water bottle holder mount (B) and two screws (C) supplied with kit. See Figure 1.
- B. Using a Philips screwdriver and two screws (C), attach water bottle holder mount (B) to frame. See Figure 2.

NOTE: Use existing holes. Do not drill new holes.

7. Install replacement water bottle holder.

- A. Locate water bottle holder (A) and screw (D) supplied with kit. See Figure 1.
- B. Slide water bottle holder (A) downward over water bottle holder mount (B). See Figure 2.
- C. Using a rubber mallet, carefully tap water bottle holder to obtain proper fit.
- D. Using a Phillips screwdriver and screw (D), attach water bottle holder (A) to water bottle holder mount (B). See Figure 2.