

Service Bulletin New Aura Series Roll Pad Upgrade Kit		
		Model(s) Affected: G3-S30-02 (G3GM01E) G3-S33 (G3GM26) G3-MS40_7 (G3MS40) G3-MS50_7 (G3MS50) G3-MS80_7 (G3MS80) G3-S76 (G3GM22) G3-FW15 G3-FW52 G3-FW83 G3-PL33 (G3PL08) G3-S52 (G3GM03) G3-S71 (G3GM08) G3-S72 (G3GM09) G3-S73 (G3GM16)

PROBLEM

The old solution to upgrade old Aura roll pad to current Aura / Versa / Ultra roll pad by upgrading frame part was costly, timely, labour intensive and increased the storage space and inventory cost of SBUs.

Models Affected	
G3-S30-02 (G3GM01E)	Matrix Aura Lat Pulldown
G3-S33 (G3GM26)	Matrix Aura Diverging Lat Pulldown
G3-S76 (G3GM22)	Matrix Aura Rotary Hip
G3-MS40_7 (G3MS40)	Matrix Aura 4-Stack Multi-Station
G3-MS50_7 (G3MS50)	Matrix Aura 5-Stack Multi-Station
G3-MS80_7 (G3MS80)	Matrix Aura 8-Stack Multi-Station
G3-FW15	Matrix Aura Olympic Decline Bench
G3-FW52	Matrix Aura Back Extension Bench
G3-FW83	Matrix Aura Adjustable Decline Bench
G3-PL33 (G3PL08)	Matrix Aura Plate Loaded Lat Pulldown
G3-S52 (G3GM03)	Matrix Aura Back Extension
G3-S71 (G3GM08)	Matrix Aura Leg Extension
G3-S72 (G3GM09)	Matrix Aura Seated Leg Curl
G3-S73 (G3GM16)	Matrix Aura Prong Leg Curl



SOLUTION

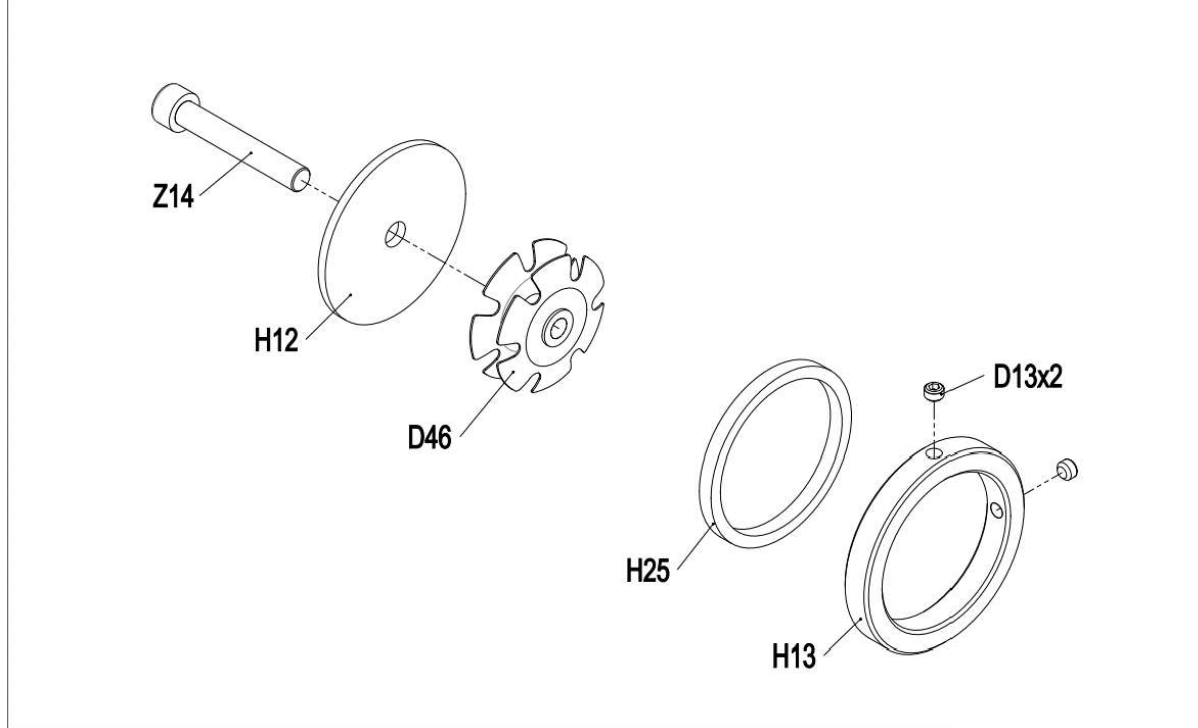
R&D has created 5 rework kits to replace the old solution, so the replacement of frame part is not required when upgrading the old Aura roll pads (short and long pads).

Rework Kit No. 1

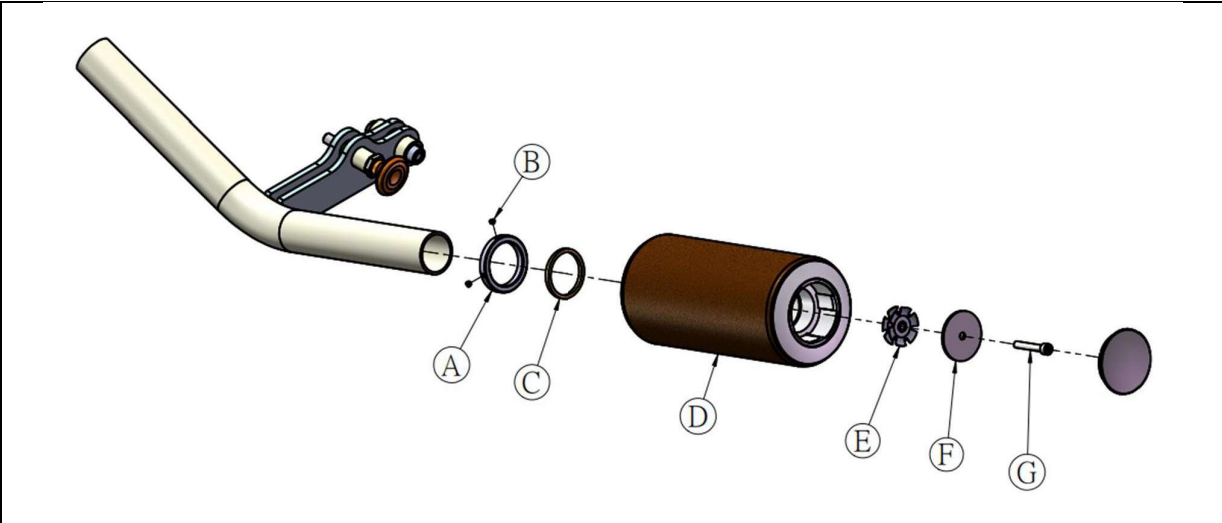
Level	Part No.	Description	Item No.	QTY
1		Roll Pad Set;;;no pad;rework group;FW15		1
2		Bracket;End Cap;;;SPHC;Φ60x3.0t;;;GM42	H12	1
2		Screw;Socket Head;M8X1.25PX50L;;;Hex Socket	Z14	1
2		Nut;;;M8*φ46;;;Special nuts; outsourcing	D46	1
2		Stopper Ring;Cap;AL6061;;;Sandblasting;;;Ø68x10	H13	1
2		Screw;Set Screw;M6x1.0Px4L;;;BED	D13	2
2		Bushing;Roll Pad;;;Hard PVC;Deep Grey;;;FW15	H25	1

Models Affected	
G3-FW15	Matrix Aura Olympic Decline Bench
G3-FW52	Matrix Aura Back Extension Bench
G3-FW83	Matrix Aura Adjustable Decline Bench
G3-PL33 (G3PL08)	Matrix Aura Plate Loaded Lat Pulldown

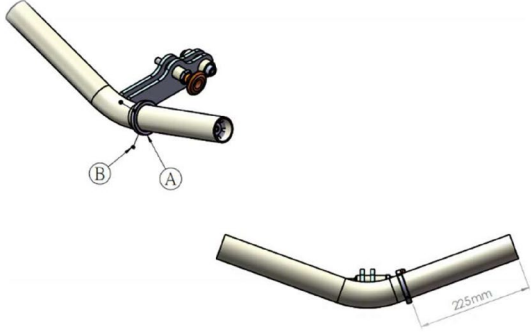
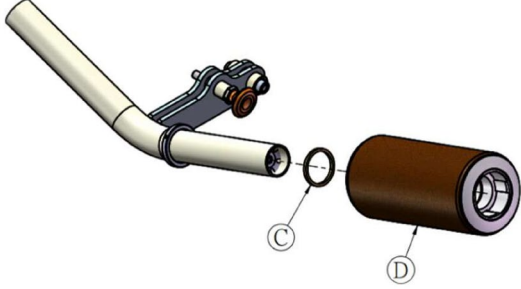
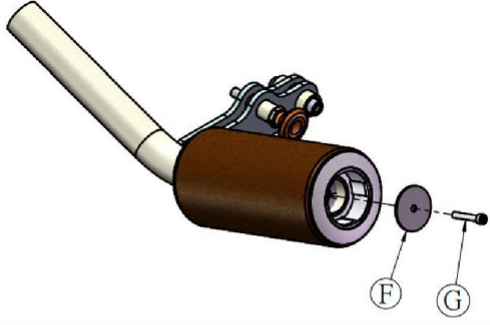
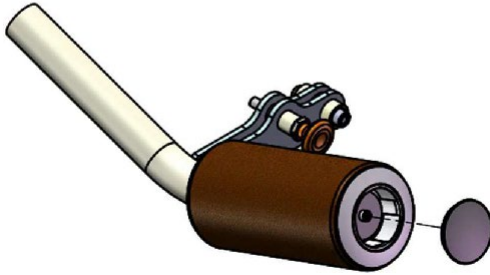
DRAWING NO	FW15-SF01
PART NAME	Round Pad Set : rework
PART NO	1000463368 A
APPROVE	SuYehua DATE 2021.03.08



UPGRADE GUIDE FOR KITS 1 AND 2



1. Insert the star nut into the tube using a rubber mallet. The depth of the star nut should be around 20-25 mm (or even a little deeper).

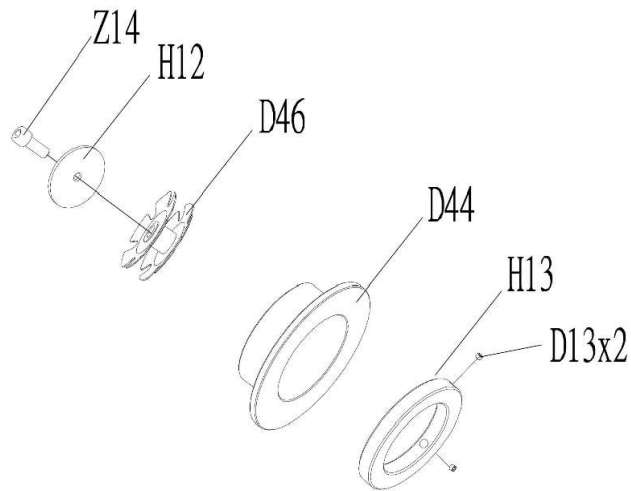
	<p>2. Put the stop ring on the tube. Tightening the 2 set screws using an Allen wrench.</p>
	<p>3. Put the bushing and the roll pad on the tube.</p>
	<p>4. Securing the roll pad with an end plate and a hex socket screw.</p>
	<p>5. Install the end cap coming with the roll pad. Upgrade complete.</p>

Rework Kit No. 2

Level	Part No.	Description	Item No.	QTY
1		Round Pad Set;;;no pad;rework group;GM26		1
2		End Cap;Round Pad;left;POM;BL/Black C;;;GM03	D44	1
2		Bracket;End Cap;;;SPHC;Φ60x3.0t;;;GM42	H12	1
2		Screw;Socket Head;M8X1.25PX50L;;;Hex Socket	Z14	1
2		Nut;;;M8*φ46;;;Special nuts; outsourcing	D46	1
2		Stopper Ring;Cap;AL6061;;;Sandblasting;AL 6061	H13	1
2		Screw;Set Screw;M6x1.0Px4L;;;BED	D13	2

Models Affected	
G3-S30-02 (G3GM01E)	Matrix Aura Lat Pulldown
G3-S33 (G3GM26)	Matrix Aura Diverging Lat Pulldown
G3-MS40_7 (G3MS40)	Matrix Aura 4-Stack Multi-Station
G3-MS50_7 (G3MS50)	Matrix Aura 5-Stack Multi-Station
G3-MS80_7 (G3MS80)	Matrix Aura 8-Stack Multi-Station

DRAWING NO	GM26-SF36
PART NAME	Round Pad Set : rework
PART NO	1000462662 A
APPROVE	Harry DATE/2021.02.02

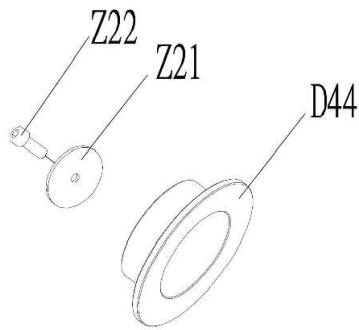


Rework Kit No. 3

Level	Part No.	Description	Item No.	QTY
1		Round Pad Set;;;no pad;rework group;GM22		1
2		End Cap;Round Pad;left;POM;BL/Black C;;GM03	D44	1
2		Washer;Swivel Axle;Φ60xΦ12.5x5;SS41;Chrome	Z21	1
2		Screw;Socket Head;M12x1.75Px60L-30L;;Hex	Z22	1

Model Affected	
G3-S76 (G3GM22)	Matrix Aura Rotary Hip

DRAWING NO GM22-SF34
 PART NAME Round Pad Set ; rework
 PART NO 1000462659 A
 APPROVE Harry DATE 2021.02.02

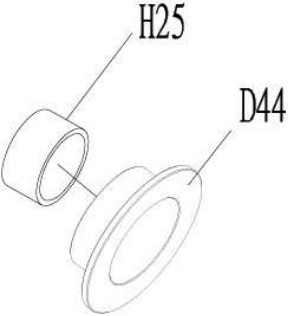


Rework Kit No. 4

Level	Part No.	Description	Item No.	QTY
1		Round Pad Set;;;no pad;rework group;GM08		1
2		Bushing;Round Pad;;Hard PVC;Deep Grey;;GM42	H25	1
2		End Cap;Round Pad;left;POM;BL/Black C;;GM03	D44	1

Model Affected	
G3-S71 (G3GM08)	Matrix Aura Leg Extension

DRAWING NO	GM08-SF35
PART NAME	Round Pad Set : rework
PART NO	1000462661 ¹ / ₂ A
APPROVE	Harry DATE 2021.02.02

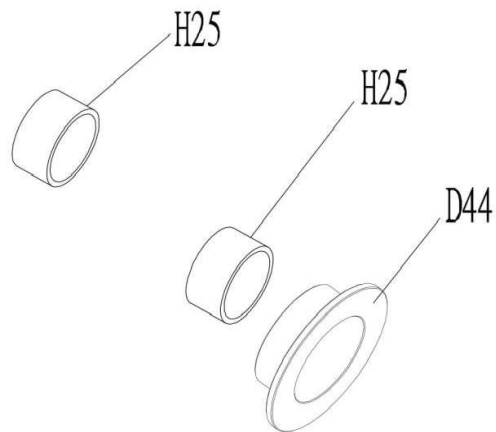


Rework Kit No. 5

Level	Part No.	Description	Item No.	QTY
1		Round Pad Set;;;no pad;rework group;GM03		1
2		Bushing;Round Pad;;Hard PVC;Deep Grey;;GM42	H25	2
2		End Cap;Round Pad;left;POM;BL/Black C;;GM03	D44	1

Models Affected	
G3-S52 (G3GM03)	Matrix Aura Back Extension
G3-S72 (G3GM09)	Matrix Aura Seated Leg Curl
G3-S73 (G3GM16)	Matrix Aura Prong Leg Curl

DRAWING NO	GM03-SF33
PART NAME	Round Pad Set : rework
PART NO	1000462658 : A
APPROVE	Harry DATE 2021.02.02



UPGRADE GUIDE FOR KITS 4 AND 5

- Snap ring pliers
- 3mm Allen wrench

Note: You will reuse some of the parts from the original pad in order to attach the new pad.

SOLUTION

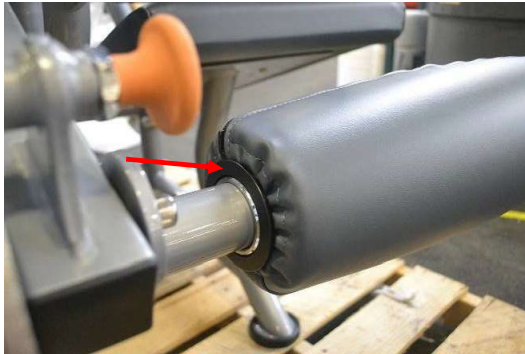
1. Use a pair of snap ring pliers to remove the snap ring.



2. Slide the original pad and the pad end caps off the unit. (Note: Do not remove the metal collar.)



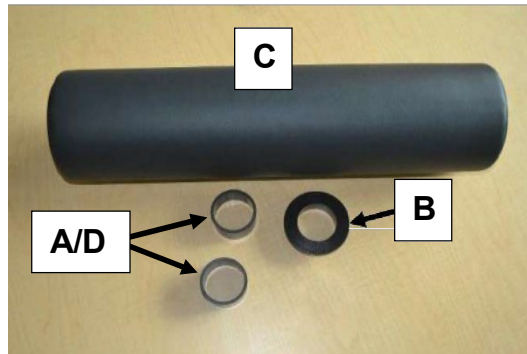
3. The original pad contains two end caps.
 - a. Remove and discard the end cap that covers the metal collar (a new part will be used in its place on the new pad).



- b. Transfer the outer end cap from the original pad to the new pad.



4. Install the new pad (reference number C below) and the appropriate rework kit for your model.
- Rework Kit 4 includes parts A and B.
 - Rework Kit 5 includes parts A,B, and D.





5. Reattach the snap ring that was removed in step 1.



6. If the pad and bushings are loose, move the metal collar (from the original configuration) to secure them in place. To move the collar, use an Allen wrench to loosen the set screw.



REVIEW OF NB-1907007

Summary

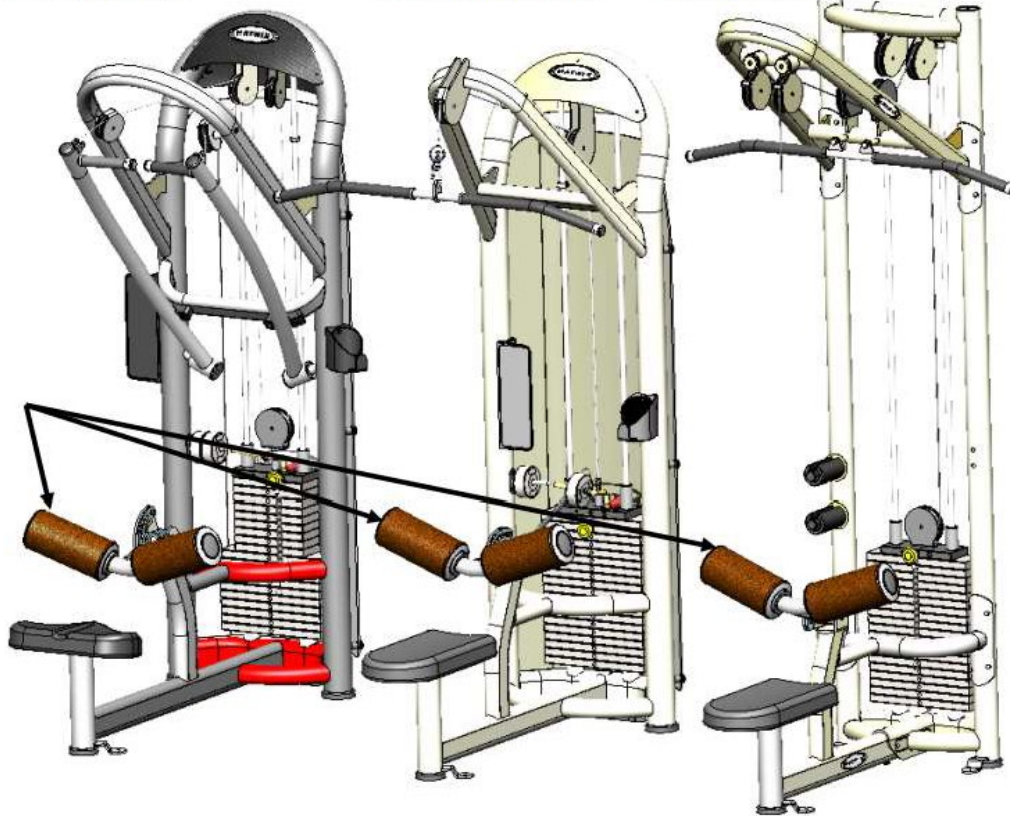
Generalizing Versa / Ultra roll pads to Aura series in order to reduce cost of maintenance.

Models Affected	
G3-S30-02 (G3GM01E)	Matrix Aura Lat Pulldown
G3-S33 (G3GM26)	Matrix Aura Diverging Lat Pulldown
G3-S76 (G3GM22)	Matrix Aura Rotary Hip
G3-MS40_7 (G3MS40)	Matrix Aura 4-Stack Multi-Station
G3-MS50_7 (G3MS50)	Matrix Aura 5-Stack Multi-Station
G3-MS51-02 (G3MS51B)	Matrix Aura Lat Pulldown (Multi-Station)
G3-MS80_7 (G3MS80)	Matrix Aura 8-Stack Multi-Station
G3-S52 (G3GM03)	Matrix Aura Back Extension
G3-S71 (G3GM08)	Matrix Aura Leg Extension
G3-S72 (G3GM09)	Matrix Aura Seated Leg Curl
G3-S73 (G3GM16)	Matrix Aura Prong Leg Curl

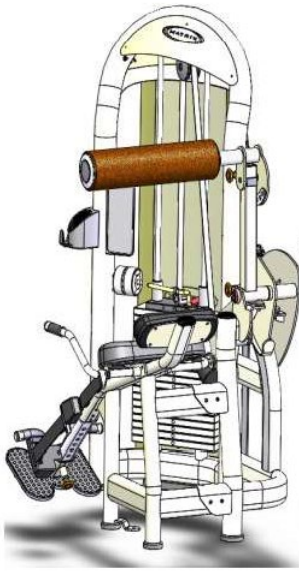
G3-S33 (GM26)

G3-S30 (GM01E)

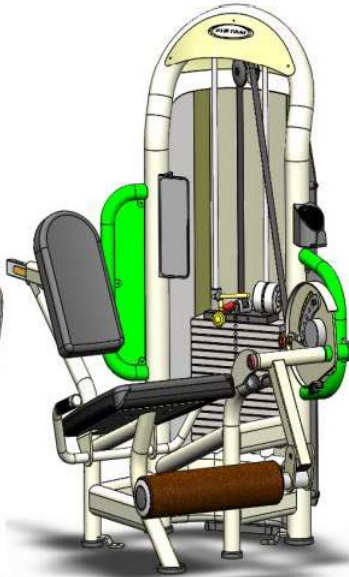
G3-MS51B



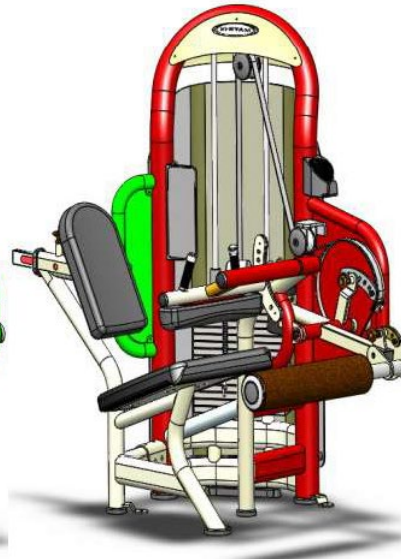
G3-S52 (GM03)



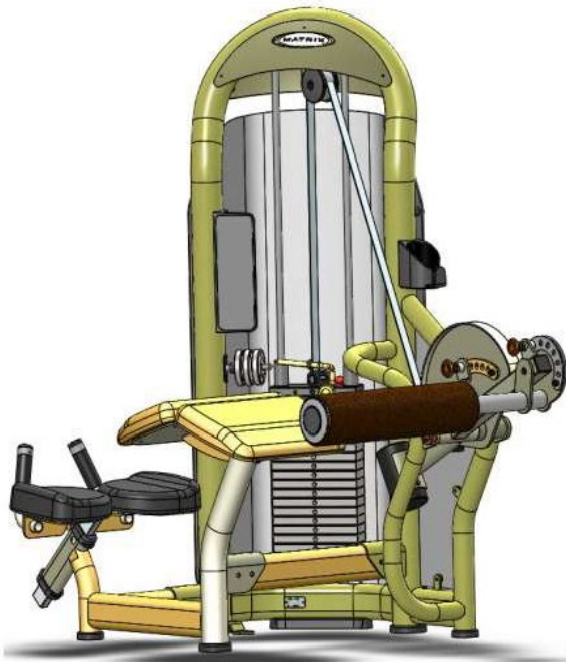
G3-S71 (GM08)



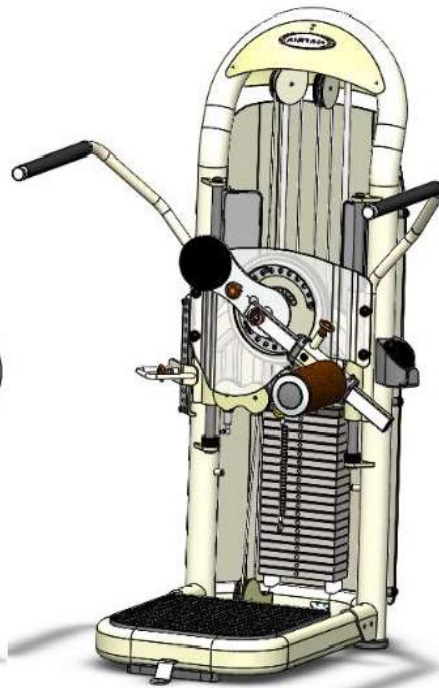
G3-S72 (GM09)



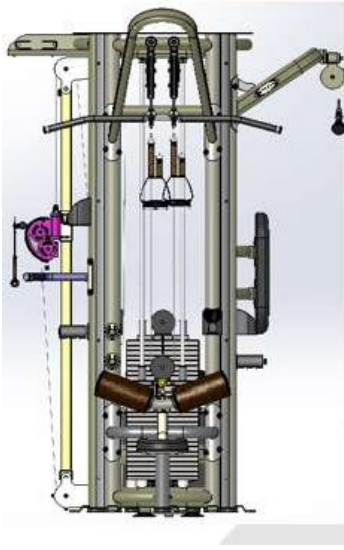
G3-S73 (GM16)



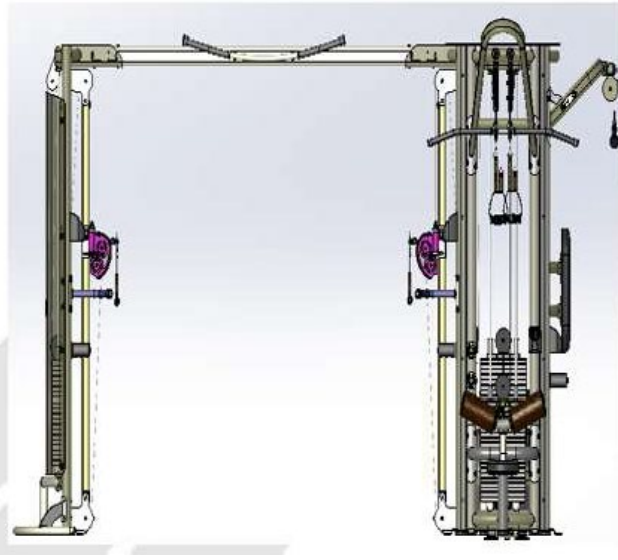
G3-S76 (GM22)



G3-MS40 7 (MS40)



G3-MS50 7 (MS50)



G3-MS80 7 (MS80)

